



# PERFECT PANEL

---

## SYSTEMS

---



***Building Green Homes  
For A Cleaner Tomorrow***

*Distributed by:*





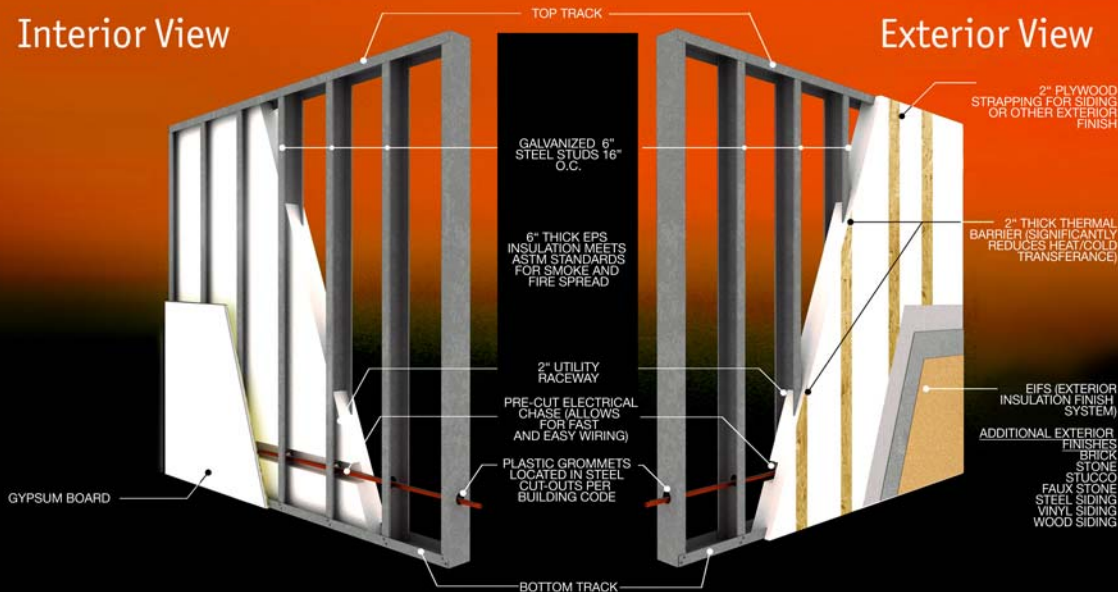
# PERFECT PANEL

## SYSTEMS

www.perfectpanel.ca

Building 'B'  
12165-154 Street  
Edmonton, Alberta  
T5V 1J3  
780-702-0600

### Interior View



Perfect Panel components consist of two basic construction materials, galvanized steel studs for strength, and EPS (expanded polystyrene) foam for high insulation value.

The steel studs are inserted into the pre-cut EPS panels. The stud spacing and gauge is customized for each individual project to meet specific load requirements and engineering. This technology does not allow any bending or twisting of the metal stud, providing superior structural strength and stability.

By embedding the metal stud into EPS foam with 2" of foam before the stud on the exterior of the wall we have eliminated any thermal transfer. What this means to you is that there is no hot or cold air penetrating the walls from the outside. This makes your home "airtight". Having an "airtight" home means you have total control of your home, making it more efficient and comfortable.

Here's the good part. Did we mention the money you would save on heating and cooling costs? With Perfect Panel you are making your home up to 3 times more energy efficient. Do your part for the environment and keep some money in your pocket. At Perfect Panel Systems we encourage you to put your money where it counts, ***your walls!***

### Features and Benefits

- Savings in building materials and labour costs
- Reduces noise levels as well as heating and cooling costs
- Prevents insect infestation, mold and mildew
- Up to 3 times more energy efficient construction
- Panels are manufactured to engineered plans and specifications
- Supports building design that meets or exceeds wind load and building code requirements
- Using readily available tools and materials pre-fabricated panels can be erected quickly in a matter of days.
- Recycled products