

PERFECT PANEL

S Y S T E M S

'B' 12165-154 Street Edmonton, Alberta T5V 1J3
Ph: (780) 702-0600 Fax: (780) 455-7284 Web: www.perfectpanel.ca



The Wilson - 1344 SF - Bi Level or Bungalow

The Wilson Fast Facts

The Size:

Width of house: 28 Feet
Depth of house: 48 Feet
Wall Height: 9 Feet

The Basics:

Bedrooms: 3 on main floor
Laundry: main floor (optional)
Bathrooms: 2

Options:

1. Attached Garage
2. 24', 26' or 32' width

The Wilson Framing Package

Framing Specifications:

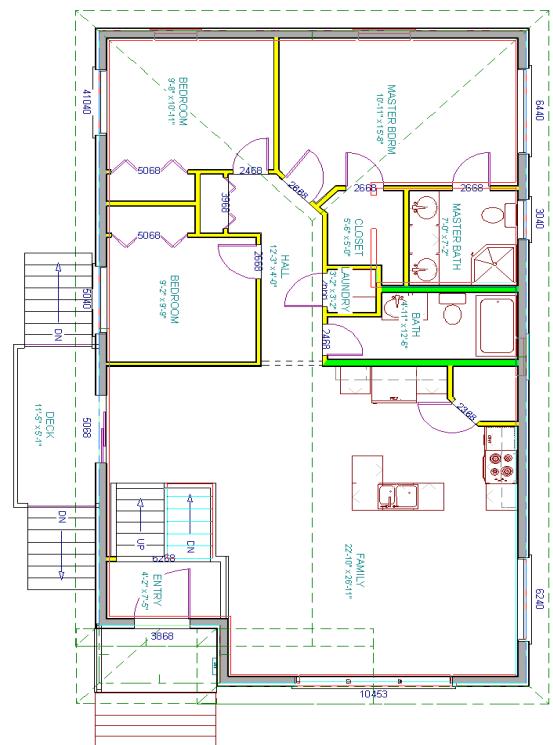
- * 5" Type II EPS Foam True R-20
- * Engineered Floor and Truss System
Subfloor: 23/32" T&G OSB
Roof Trusses: Engineer Designed, 24" O.C. with 18" overhang
- * 3/8" OSB on roof sheathing with H-Clips
- * 25 yr warranty fibreglass shingles
- * Treated deck nailer
- * All interior framing lumber as required
- * Glue & Adhesives
- * 6 mil poly vapor barrier
- * Rim board insulation filler

Exterior Windows and Doors:

- * PVC windows with vinyl jamb extensions.
HS1A - Dual 1 Low E
- * Insulated exterior doors

Benefits:

- * Up to 3x more energy efficient
- * Resistant to mold, mildew and fungus growth
- * Savings in building materials and labour costs.
- * Lightweight and easy to handle
- * Can be assembled in days
- * Easy installation manual available



All Material Only
\$ 39,950.00



AUTHORIZED DEALER

www.allweatherwindows.com